

Liver Function Panel

Why was a Liver Function Panel ordered?

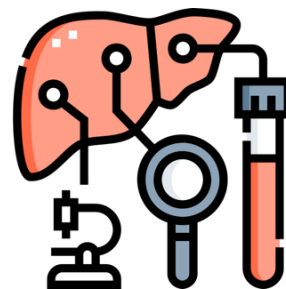
A liver function panel is a blood test that checks how well your liver is working by looking at different chemicals made by your liver. This test helps your health care provider see if your liver is healthy or if it may be hurt or swollen.

Sometimes, a result might be a little outside the normal range, but that doesn't always mean something is wrong. If you're worried, please follow your usual steps for asking health care questions, as recommended by your health care providers.

When is a Liver Function panel used?

Health care providers may order this test if:

- You have stomach or liver problems.
- Your medical history or check-up shows signs of liver trouble.
- When you have other health issues that can affect your liver.
- You're being checked for long-term liver diseases like hepatitis or cirrhosis.
- You're taking medicine that could affect your liver.



What is most important in a Liver Function panel?

Liver function panels measure the levels of certain chemicals that indicate whether your liver is functioning normally, such as:

- **Bilirubin:** A yellow substance made when red blood cells break down. High levels can mean liver or bile duct problems. There are different types of bilirubin, sometimes only one type is tested.
- **Albumin:** The main protein found in blood that helps carry things like vitamins and hormones.
- **Total Serum Protein:** Total amount of protein in your blood.
- **Alanine Aminotransferase (ALT):** An enzyme that helps break down proteins. High levels can mean liver damage.
- **Aspartate Aminotransferase (AST):** An enzyme found in the liver, heart, and muscles. High levels can mean you are having issues with your liver, muscles, or heart.
- **Alkaline phosphatase (ALP):** An enzyme found in the liver, bones, and bile ducts. High levels can mean liver or bone problems.

What could a Liver Function panel find?

- Signs of liver infection or swelling.
- Long-term liver disease.
- Blockages in the liver or bile ducts.
- How well your medicine is working or if it's causing side effects.

This sheet is just for information. Always talk to your health care provider if you have questions.